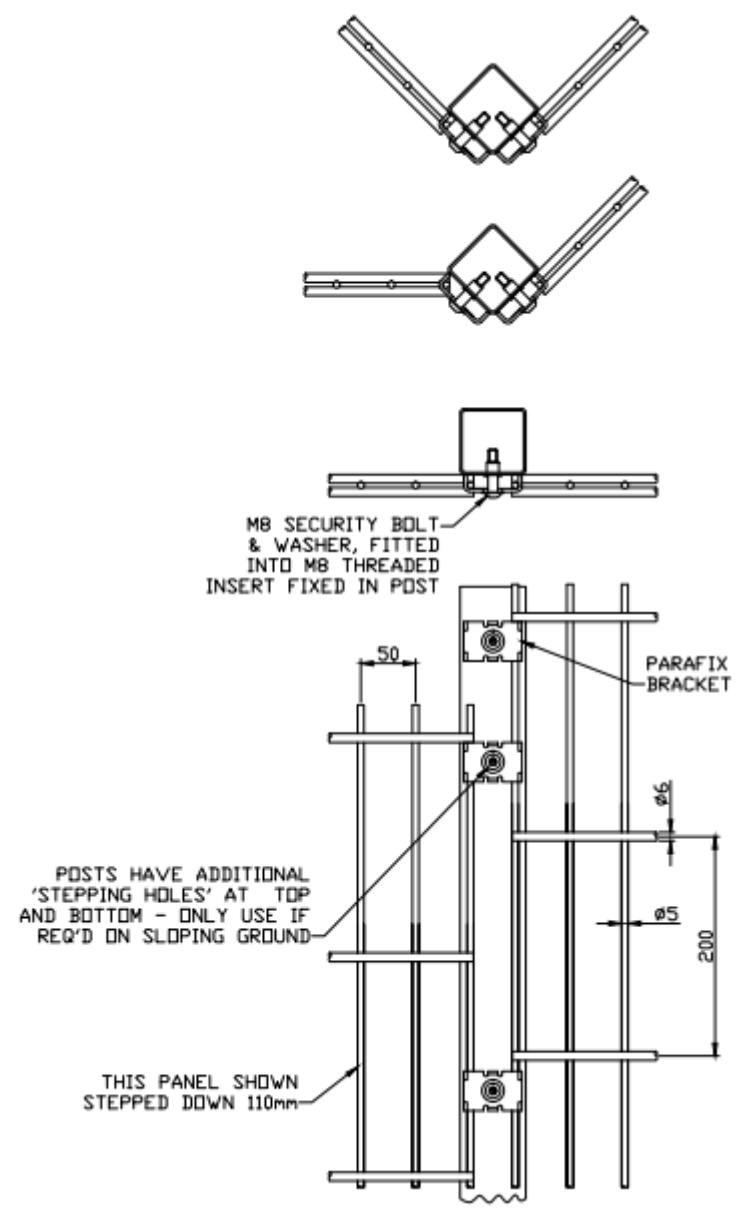



ELEVATION OF 1.83m POST
(FIVE STANDARD FIXING POINTS)

ELEVATION OF 2.03m POST
(SIX STANDARD FIXING POINTS)

ELEVATION OF 2.43m POST
(SEVEN STANDARD FIXING POINTS)

PARAMESH 656



	Finish	Customer	Job No.
-------------------------------------------------------------------------------------	--------	----------	---------